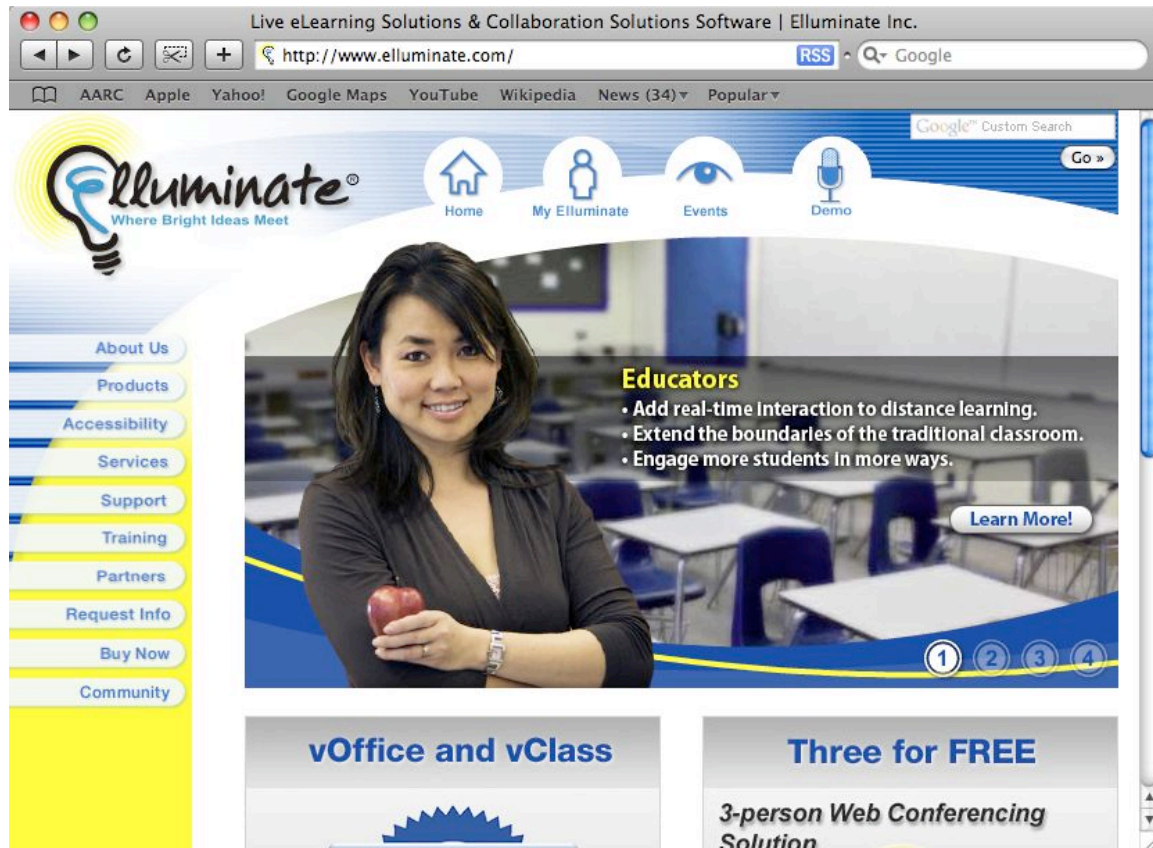


Mac Instructions for Elluminate Setup

Go to <http://www.elluminate.com/>



Select Support tab on left side

Depending on your security settings, you may see the following dialog box.
Select "Trust" to continue



Step 1 is automatically run to test for Java. You should have version 1.5 or higher. Mac OSX 10.4 and higher already have this version installed. Higher

versions (1.5.0_16 shown below) are acceptable.

Illuminate Product Support



First Time Users

Step 1 - Java software check

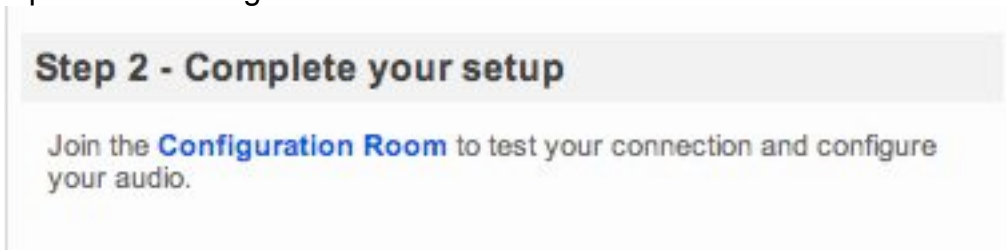
If you're using Mac OS X 10.1 or higher, the required software is pre-installed on your machine.

[Download & install the required software](#)

Java version you are running:
1.5.0_13 Apple Inc.
Detailed pre-requisite information can be found [here](#).

If Java is not current, click on the link to download or update. You will receive a WARNING message if that is required.

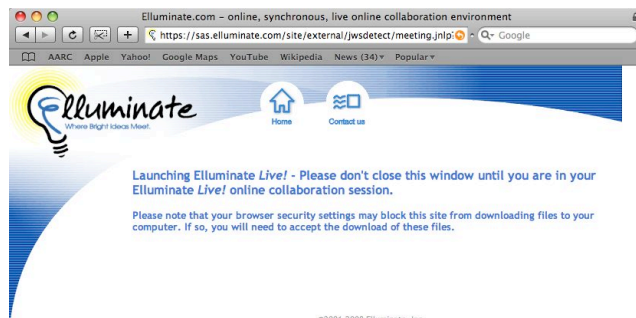
Step 2 Go to Configuration Room



Step 2 - Complete your setup

Join the **Configuration Room** to test your connection and configure your audio.

Click on "Configuration Room". The following screen will appear.



Elluminate.com - online, synchronous, live online collaboration environment

https://sas.illuminate.com/site/external/jwsdetect/meeting.jnlp

Home Contact us

Launching Elluminate Live! - Please don't close this window until you are in your Elluminate Live! online collaboration session.

Please note that your browser security settings may block this site from downloading files to your computer. If so, you will need to accept the download of these files.

©2001-2008 Elluminate, Inc. All Rights Reserved. (sas)

At this point a small file will be downloaded to your computer called *meeting.jnlp*. If you allow "safe" applications to automatically start, the following window will appear. If you do not allow auto-start, you will have to locate the file in your preferred download location. In Safari, select Preferences > General and look at the folder at "Save downloaded files to:". In Firefox, select Preferences > Main and look at "Save files to". Go to the folder indicated, and double click on the *meeting.jnlp* file.



PLEASE NOTE: You may also need to find the jnlp file on your Desktop, or wherever your download files are sent, when viewing the live broadcast.

Click "Trust" tab if it appears

Elluminate Live! 8 start

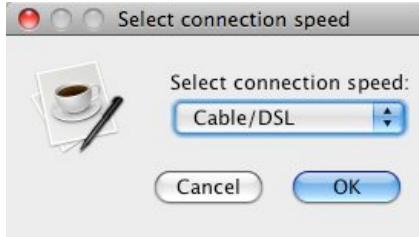


Select "I Agree" button on the License page, then "OK"



If this is your first time, you will need to Select Speed.

- Select Cable/DSL if you have any type of broadband connection or Ethernet or LAN or network.
- Select 56Kbps Dialup if you are using a telephone dialup modem, for any type of dialup connection.



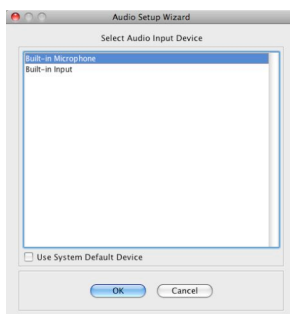
Follow instructions on the display in the WhiteBoard window for Audio Setup Wizard

Speaker Setup



Press Play, adjust volume, press Stop
Answer Yes or No on Confirmation page

Since we are not using participant audio, you may press Cancel on the "Select Audio Input Device" setup page



Step 3. You may now return to Live eLearning Software Technical Support From Elluminate and select the training sessions.

Step 3 - Learn more about Elluminate *Live!*

- ▶ [Online Orientation](#)
- ▶ [Quick Reference Guide](#)
- ▶ [Recorded Introduction](#)